

People

Museum presents play by Catharine Ladd, exhibit beginning October 18

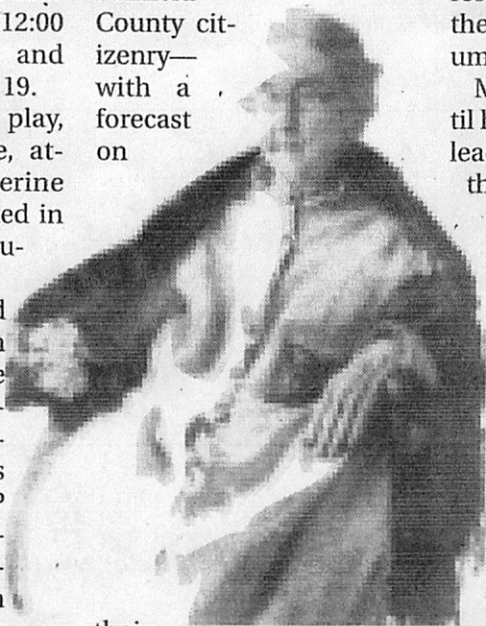
The Fairfield County Museum will open Catharine Ladd: Nineteenth Century Voice of Fairfield at 1:00 PM on Saturday, Oct. 18. The exhibit opening is preceded by a dramatic presentment of Mrs. Ladd's original comedic play A Grande Scheme. The play will be staged on the Museum's tented back yard at 12:00 noon on Saturday, and again on Sunday, Oct 19.

The original 1853 play, The Grande Scheme, attributed to Catherine Ladd, will be presented in the backyard of the Museum.

The play is presented in cooperation with the annual Pine Tree Players' Shakefest beginning each afternoon at 1 PM across the street in the PTP playhouse. The curious theme of match-making between cousins by Chester, a "frothy old bachelor," will be introduced to our modern audience by director Dr. Martha Macdonald, professor of English literature at USC (Lancaster campus).

The exhibit, curated by Michaela Pilar Brown with contributions from Ladd scholar Patricia Veasey, will showcase the life of this legendary Fairfield county educator, artist, and ancestor. Mrs. Ladd was a well-known writer and

essays, particularly on art and education. The display focuses on Catharine's life in the context of Fairfield County history and examines some of her written works. A featured essay, "New Improvement," addresses politics surrounding the 1868 elections and their impact on Fairfield County citizenry—with a forecast on



their impact today. In context to the current 2008 Presidential election, Catharine took a strong position on the responsibilities of registered voters.

Around 1850, Catharine and her portrait artist husband George W. L. Ladd purchased the Richard Cathcart home on Congress Street of Winnsboro and opened a boarding school for the education of young ladies called the Winnsboro Female Insti-

ered a counterpart to the well-known nearby Mt. Zion College for males. Girls from Fairfield and many other places came to learn both the cultural and academic masteries necessary to develop ladies of intelligence and social standing. In 1976, the 146 year-old building would be restored and reopened as the Fairfield County Museum.

Mrs. Ladd continued until her death in 1899 to be a leader in bringing arts to the community. Her theatrical group, The Thespian Corps, became one of the earliest acting troupes established in the state.

The old railway passenger depot behind Winnsboro's Town Clock housed the stage and auditorium and became known as Thespian Hall. Mrs. Ladd's

theatrical and musical productions helped the townsfolk to survive during the difficult times after the War Between the States.

The Museum is located at 231 S. Congress St., in downtown Winnsboro, a block and a half south of the Robert Mills Court House and the well known landmark, the Town Clock Tower. Call the staff at (803)635-9811 or email fairfieldmus@truvista.net



Ladd
The Ladd special g
Times: O
tober 19

M

B
The (Church
ary Pr.
be held
ber 18,
Gethse
Baptist
in Blair
Gues
er will
tor
Robbins
tured)